



PUBLIC WORKS
SUMMIT

Connecting California Contractors
and Public Works Agencies

LADWP Overview

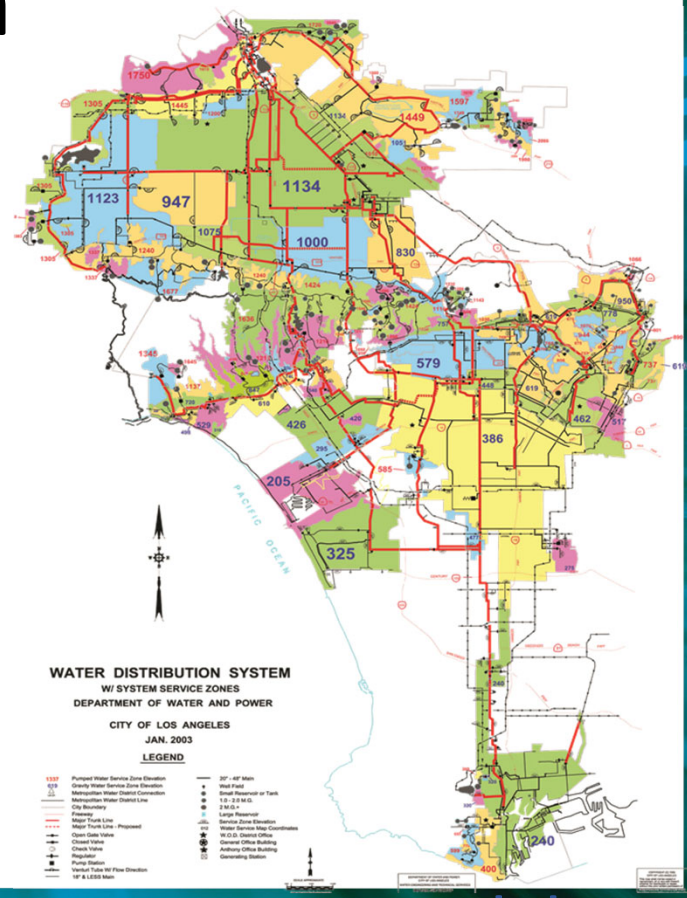
- Nation's largest municipal utility
- Comprised of Water, Power and Joint Systems
- More than 11,000 employees
- Provide water and power to over 4 million people



Water System

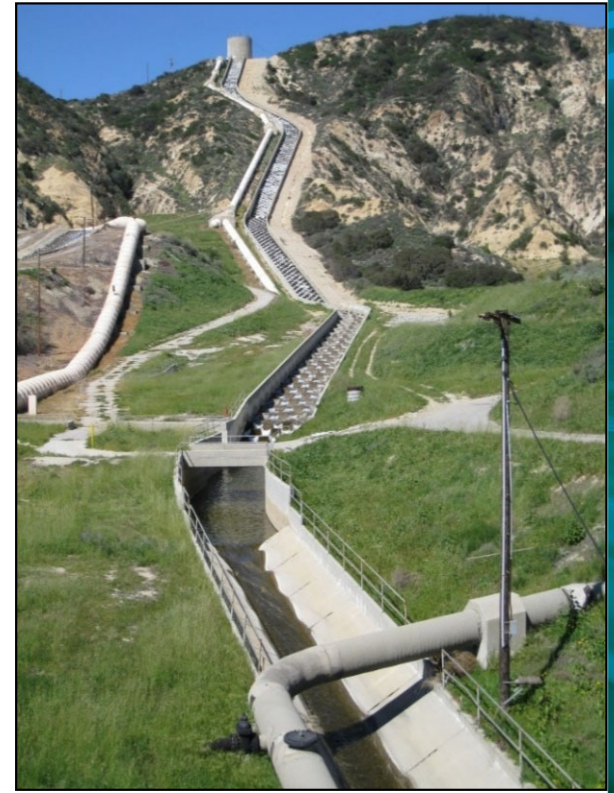
- **Covers 472 square miles**
 - Over 7,300 miles of pipeline
 - 116 in city tanks & reservoirs
 - 96 pump stations
 - 331 regulator stations

- **Over 467 million gallons of water delivered each day**



Water System

- **The Work We Do**
 - Trunk Lines
 - Treatment/Advanced Treatment Facilities
 - Operations and Maintenance Facilities
 - Reservoirs and Dams
 - Aqueducts
- **In House/Contract Design and Construction**



Water System Programs

- Regulatory Compliance/Water Quality
- Infrastructure Reliability
- Local Water Supply
- Operation Support



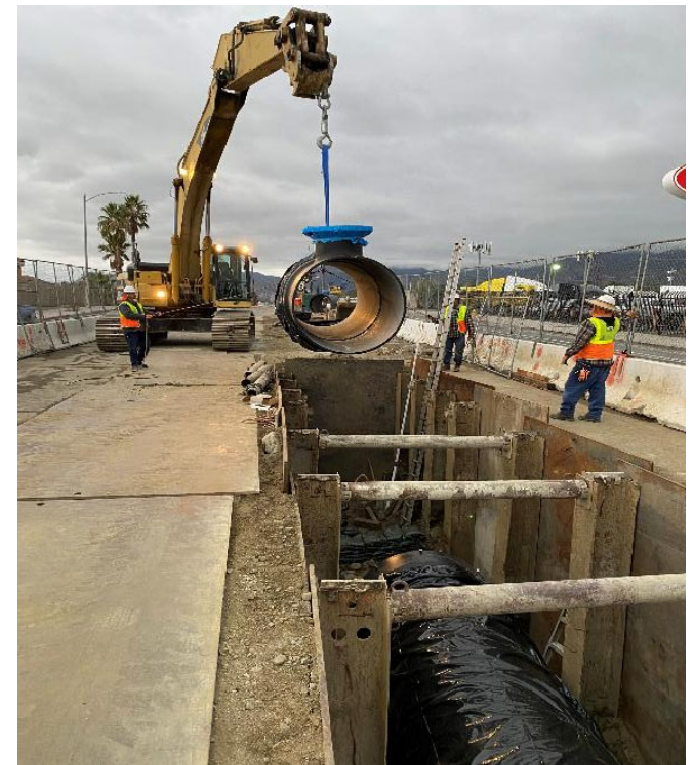
Water System Program Regulatory Compliance/Water Quality

- Water Treatment
- Water Quality Improvement
- Owens Lake



Water System Program - Infrastructure Reliability

- Replace High-Risk Infrastructure
- Seismic Resiliency



Water System Programs - Local Water Supply

- Groundwater Cleanup
- Stormwater Capture
- Water Recycling
- Water Conservation
- PureWater LA



Water System Program - Operation Support

- Facility Improvement Projects
- Water System Support Programs



Upcoming Projects



**Grant Lake
Progressive
Design Build**



**River Supply
Conduit**



**Manhattan
OSHG**



**Mid-Valley
Facility**



**Western
District Yard**

Grant Lake Program

Mono County, CA

The program will include design and construction of the Grant Lake Projects which include:

- **Reservoir Outlet Valve:** Replacement of a 48-inch outlet valve, retrofit of a deep shaft, new shaft house, and modification of reservoir intake structure
- **Siphons:** Installation of four 48-inch HDPE pipes (approximately 1,700 LF)
- **Spillway Modification:** Realignment of the existing spillway channel



Design Build

- **Construction Cost Estimate:** \$140M
- **Anticipated Advertise Date:** August 2026
- **Professional Services:** Oversee the engineering design, risk assessment, procurement, construction, inspection, testing, start-up, commissioning, and project close-out



River Supply Conduit (RSC) Connecting Trunk Line

Silverlake

The project will construct 1400 linear feet of new Trunk Line and a regulator station to connect two major trunk lines.

- **Construction Cost Estimate:** \$35.5M
- **Anticipated Advertise Date:** May 2027
- **Subcontracting Opportunities:**
 - Traffic Control
 - Shoring Installation
 - Utility Potholing
 - Steel Pipe Welding
 - Street Restoration



Manhattan On-site Hypochlorite Generation (OSHG) Station and Iron & Manganese Filtration System

Manhattan Wellfields

The projects will construct a new 30 cfs chlorination station and a 10 cfs Iron & Manganese filtration system.

- **Construction Cost Estimate:** \$13.6M
- **Anticipated Advertise Date:** August 2026
- **Subcontracting Opportunities:**
 - Reinforcing Steel
 - HVAC Installation
 - Construction Equipment Rentals
 - Fencing
 - Driveway Paving



Mid-Valley Water Facility Yard

The project includes the design and construction of a new multi-building campus to provide critical functions to support Water System operations and an injection wellfield. The facility will include:

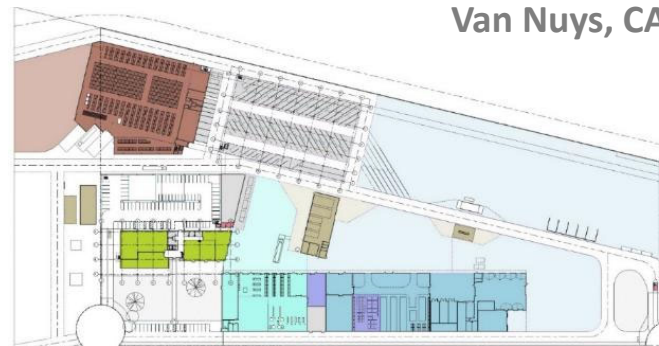
- Construction Yard and Meter Shop
- Supply Chain Services Warehouse
- Fuel Station and Fleet Maintenance Building
- Injection Wellfield

Design Build

- **Construction Cost Estimate:** \$476M
- **Anticipated Advertise Date:** June 2026
- **Professional Services:** Oversee the engineering design, procurement, construction, inspection, testing, commissioning, and project close-out



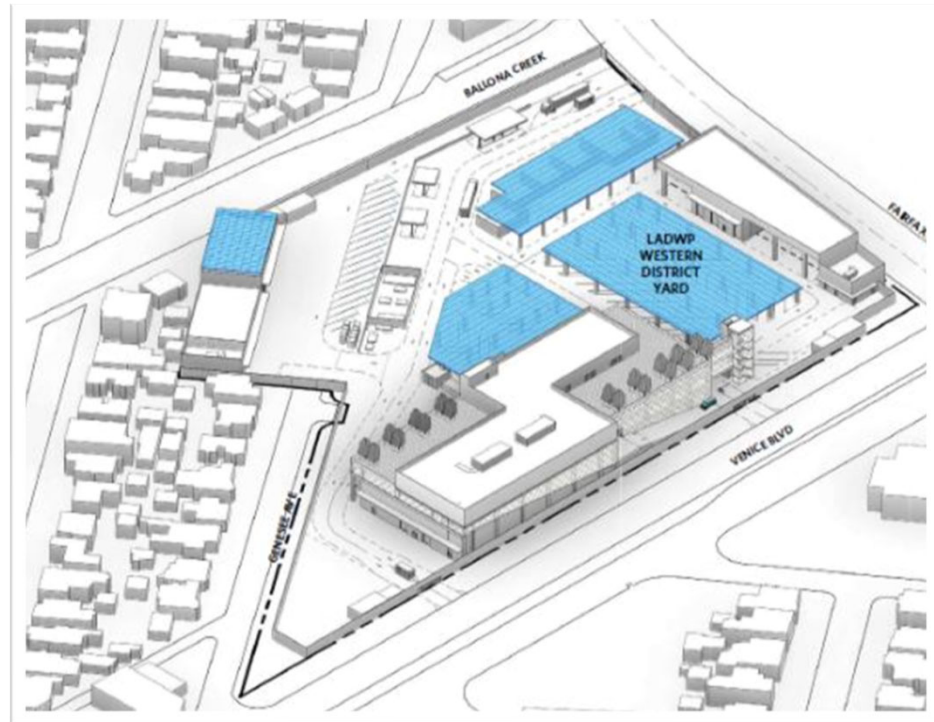
Van Nuys, CA



Western District Yard Renovation

West Los Angeles

- Replacing outdated buildings with new administrative, warehouse, fleet, and support facilities, and upgraded site infrastructure across the **8.4-acre** Western District Yard site
- **Construction Cost Estimate:** \$436.8M
- **Anticipated Advertise Date:** May 2027
- **Subcontracting Opportunities:**
 - Excavation, Grading, Utilities, Stormwater
 - Paving, Concrete
 - Reinforcing Steel
 - HVAC
 - Construction Equipment Rentals
 - Landscaping



LADWP Supply Line

For information on other opportunities with LADWP, please visit the LADWP Supply Line Newsletter: [Second Quarter 2026 SupplyLine | Los Angeles Department of Water and Power](#)

Future Contract Opportunities					
Division	T&E/RACS	Procurement Type	Target Advertise Date	Estimated Amount	Description
Water System - Construction (Invitation for Bid)					
Water Engineering & Technical Services	City Trunk Line North Unit 2 Pipe Jacking, Splicing, and Transverse Open Trench Construction / 227110	Construction (RFQ)	Apr-25	\$77,000,000	Installation of Welded Steel Pipe from Terra Galia to City Trunk Line Unit 1 connection along Canterbury Avenue east of Eagle Street. The construction will be done by LADWP Trunk Line Construction group and Contractor will have, rig-line and transverse open trench.
Water Engineering & Technical Services	Sewer House Connection for Unified Utility Record Operations Center (UUROC) / 237116	Construction (RFQ)	Apr-25	\$150,000	Installation of single sewer house connection lines to support relocation of UUROC in Pacific Palisades.
Water Engineering & Technical Services	LA Reservoir Outfall Pipe Line Coating Installation / 237110	Construction (Spec)	May-26	\$2,500,000	Painting 1,000 linear feet of 120-inch diameter pipe with polyurethane.
Water Engineering & Technical Services	LAATF Chlorine Densities & S.P. Replacement / 227110	Construction (RFQ)	May-26	\$6,500,000	Replacement of 2 Chlorine Densities at the LA Aqueduct Filtration Plant (LAATF).
Water Engineering & Technical Services	Western Trunk Line - Phase 1 / 227110	Construction (Spec)	Jun-26	\$140,000,000	Replace approximately 23,500 feet of metal-clad, concrete and welded-steel pipes with 36-inch and 54-inch welded steel pipe and earthquake resistant ductile iron pipe.
Water Engineering & Technical Services	River Supply Conduit Connecting Trunk Line Construction / 237110	Construction (RFQ)	Jun-26	\$23,000,000	Installation of 1,400 linear feet of 80-inch welded steel pipe, a pressure regulator station, a pressure relief station, and suction valves.
Water Engineering & Technical Services	Footfall Trunk Line Unit 3 / 227110	Construction (Spec)	Jun-26	\$120,000,000	Pipe jacking, slitting, drilling and paving services for the Footfall Trunk Line project.
Water Engineering & Technical Services	Redmont Pump Station and Tank / 227110	Construction (Spec)	Jul-26	\$90,000,000	Demolition of existing pump station and tank, and installation of new pump station and tank.
Water Engineering & Technical Services	Minuteman Wells (MWS) and Reservoir Phased Suez Shut Up / 227110	Construction (Spec)	Sep-24	\$16,000,000	Construct On-Site Hydroelectric Generation (OSHG) station to replace existing (passive) distribution station at Minuteman Wells.



Second Quarter 2026 SupplyLine

Published April 21, 2025

