



PUBLIC WORKS  
**SUMMIT**

Connecting California Contractors  
and Public Works Agencies



Port of  
**LONG BEACH**  
THE PORT OF CHOICE

# The Port of Choice

Armond Morad

Manager of Engineering

Construction Management Division

United Contractors Public Works Summit

May 28, 2026



# Long Beach Board of Harbor Commissioners



**FRANK COLONNA**  
President



**STEVEN NEAL**  
Vice President



**SHARON L. WEISSMAN**  
Commissioner



**BOBBY OLVERA JR.**  
Commissioner



**BONNIE LOWENTHAL**  
Commissioner

# PORT OF LONG BEACH

An aerial photograph of the Port of Long Beach, California. The image shows a large, busy harbor with numerous shipping lanes, piers, and cargo ships. The port is surrounded by dense urban development, including residential areas and commercial buildings. The water is a deep blue, and the sky is clear. The text 'PORT OF LONG BEACH' is overlaid in large, white, bold letters at the top of the image.

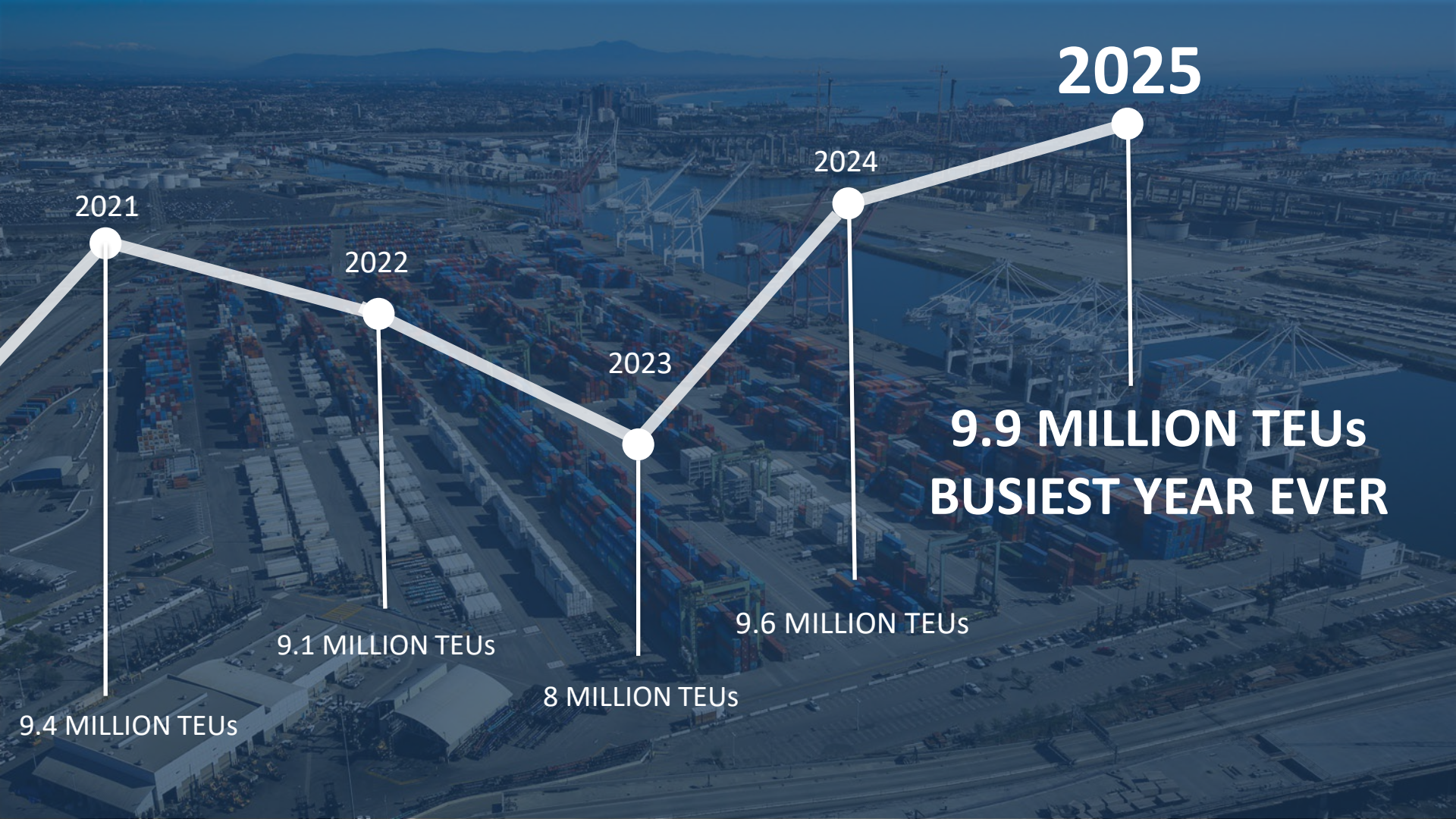
\$300 Billion in Trade Annually  
Premier Gateway for trans-Pacific trade  
Voted Best West Coast Seaport/N. America  
1 of 18 Commercial Strategic Seaports

# ECONOMIC ENGINE

A man in a black t-shirt and white shorts is operating a forklift in a port setting. The background shows stacked shipping containers and a bright sky. The entire image has a blue overlay. The text is white and bold.

## PORT-CONNECTED JOBS:

- 543,000 JOBS – 1 IN 17 – L.A. & ORANGE COUNTIES
- 691,000 IN 5-COUNTY REGION
- 1.1 MILLION IN CALIFORNIA
- 2.7 MILLION IN U.S.



2021

2022

2023

2024

2025

9.4 MILLION TEUs

9.1 MILLION TEUs

8 MILLION TEUs

9.6 MILLION TEUs

**9.9 MILLION TEUs  
BUSIEST YEAR EVER**

# Q1 CARGO

Total TEUs  
**2,390,225**

**No. 1 in North America for Jan-March**

An aerial photograph of a large industrial port facility, likely a shipyard or container terminal. The facility is situated on a peninsula or island, surrounded by water. It features numerous buildings, parking lots filled with vehicles, and large stacks of containers. A large blue and white ship is docked at a pier in the foreground. The background shows a vast expanse of water and distant hills under a cloudy sky.

**Clarify our Vision**

**Simplify our Mission**

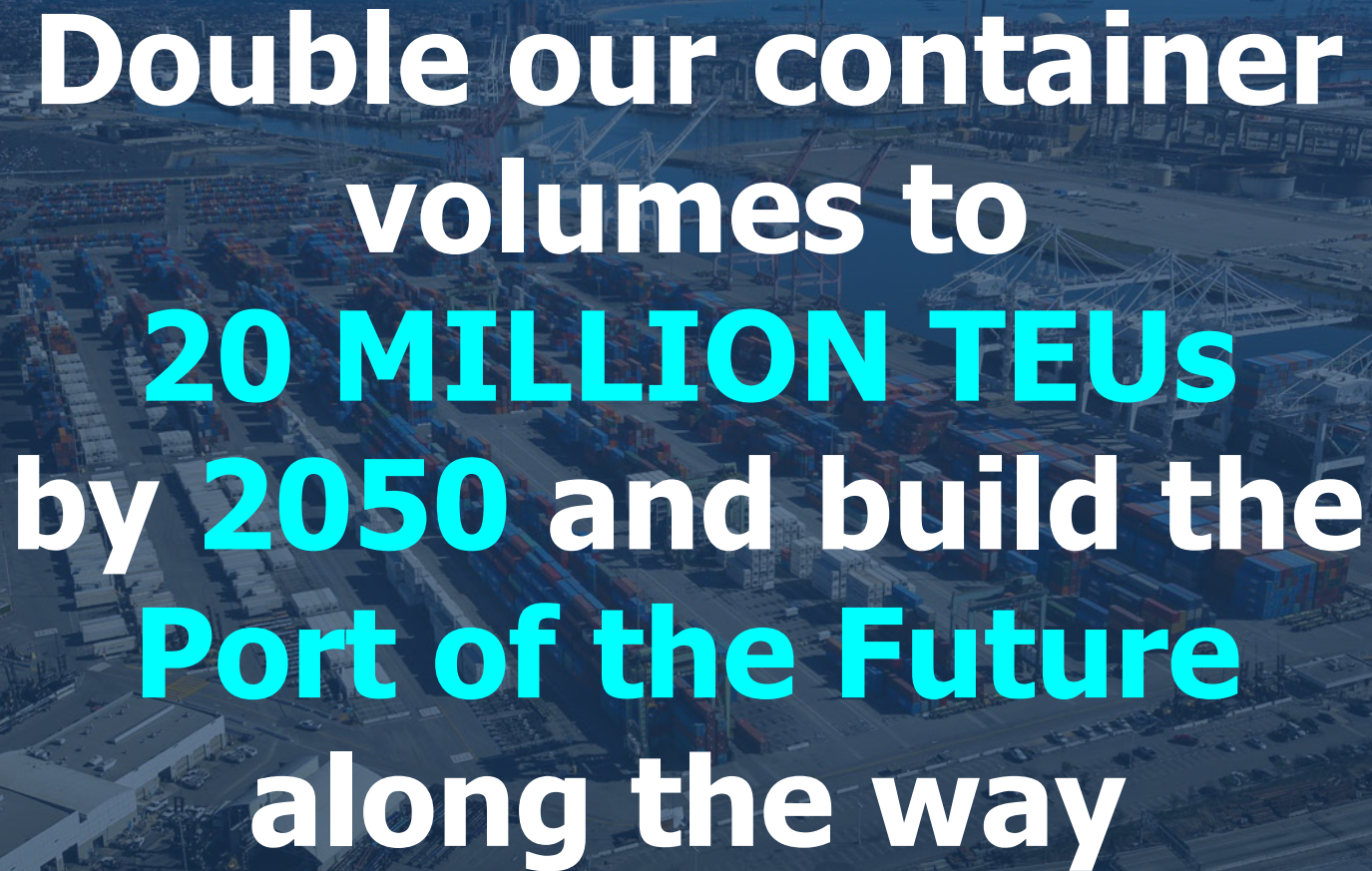
**Amplify our Impact**



# 2050

**FAST. FORWARD.**



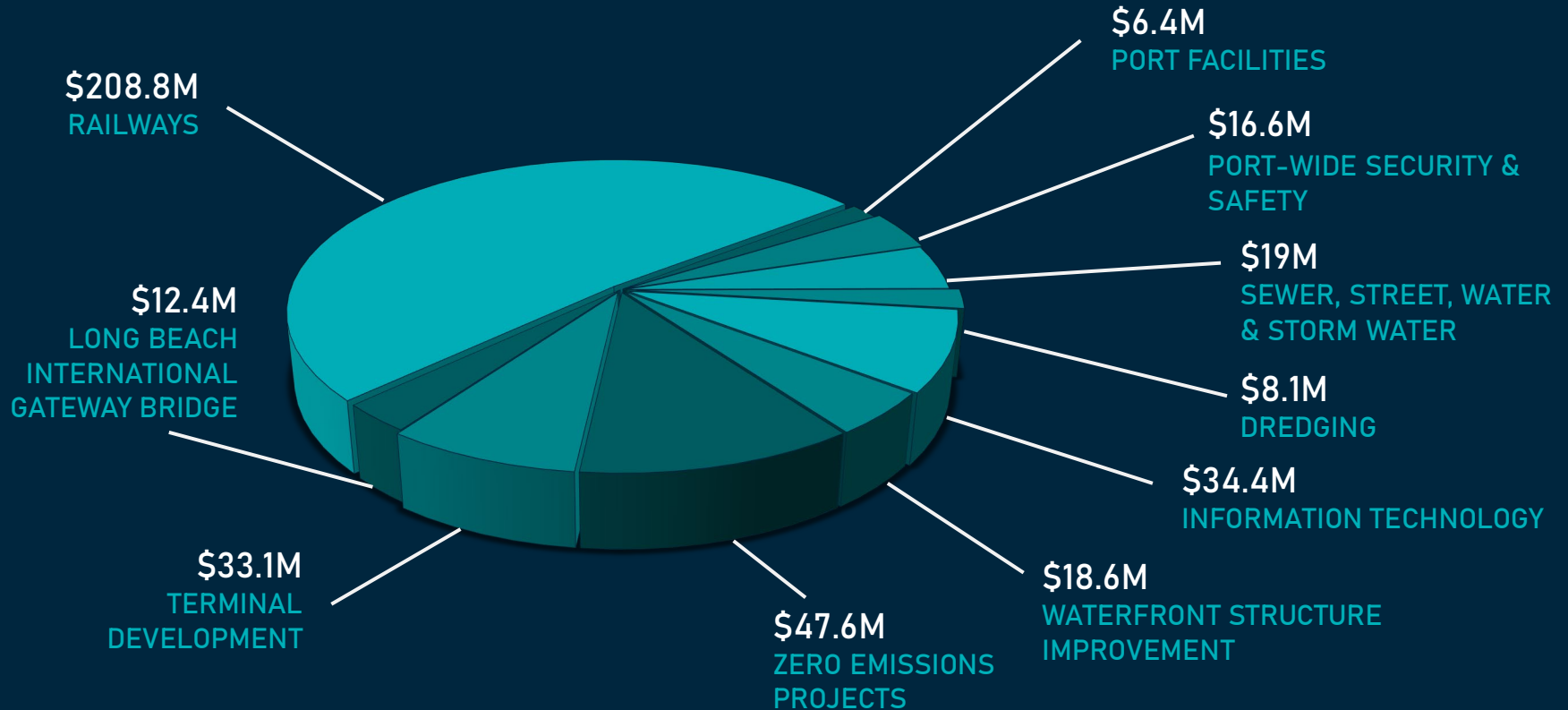
An aerial photograph of a large port facility, likely a container terminal, with numerous stacks of colorful shipping containers and several large gantry cranes. The image is overlaid with a semi-transparent blue filter. The text is centered and reads: 

**Double our container  
volumes to  
20 MILLION TEUs  
by 2050 and build the  
Port of the Future  
along the way**

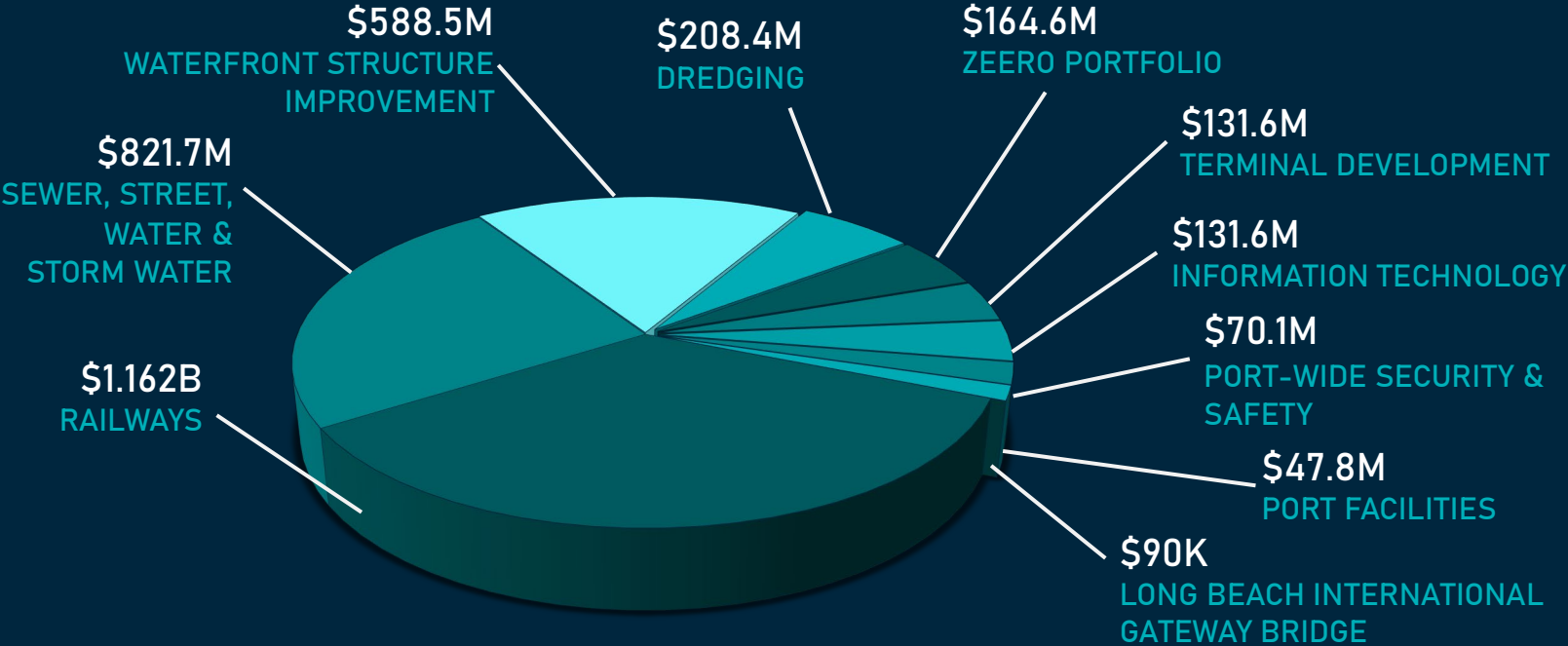
# TEAMWORK MAKES THE DREAM WORK



# FY 2026 BOARD ADOPTED CAPITAL PROGRAM BUDGET \$405 MILLION



# 10 YEAR CAPITAL PROGRAM FORECAST (FY 2027 – 2036) \$3.3 BILLION



- 
- **INCREASE TERMINAL CAPACITY**
  - **INCREASE RAIL CAPACITY**
  - **IMPROVE OPERATIONAL EFFICIENCY**
  - **IMPLEMENT ZERO-EMISSIONS INFRASTRUCTURE**

# Pier G South Slip Fill

A large red clamshell bucket is suspended by a blue crane, dumping a load of dark material into a barge. The crane has 'MITSUBI E&S' and 'ITS' logos. In the background, there are stacks of shipping containers, some with 'ONE' logos, and a tall tower structure. The scene is set at a port with a clear sky.

- Creates 19 acres of new land
- 3,400-foot wharf
- Provides dramatic increases in efficiency

# PIER B ON-DOCK RAIL SUPPORT FACILITY



- ON TRACK FOR COMPLETION IN 2032
- TRIPLES ON-DOCK RAIL CAPACITY
- CUTS RAIL DWELL FROM 4 DAYS TO 24 HRS
- SEAMLESS INTERFACE WITH NATIONAL RAIL NETWORK

# PIER B ON-DOCK RAIL SUPPORT FACILITY





**ONE** =  
**TRAIN**



**750**

Truck trips eliminated by one  
double-stacked on-dock train

# MOST CONNECTED

ACCESS TO MAJOR U.S. RAIL  
HUBS





SHANGHAI

22  
DAYS

LONG BEACH

COLUMBUS

31  
DAYS

PANAMA CANAL

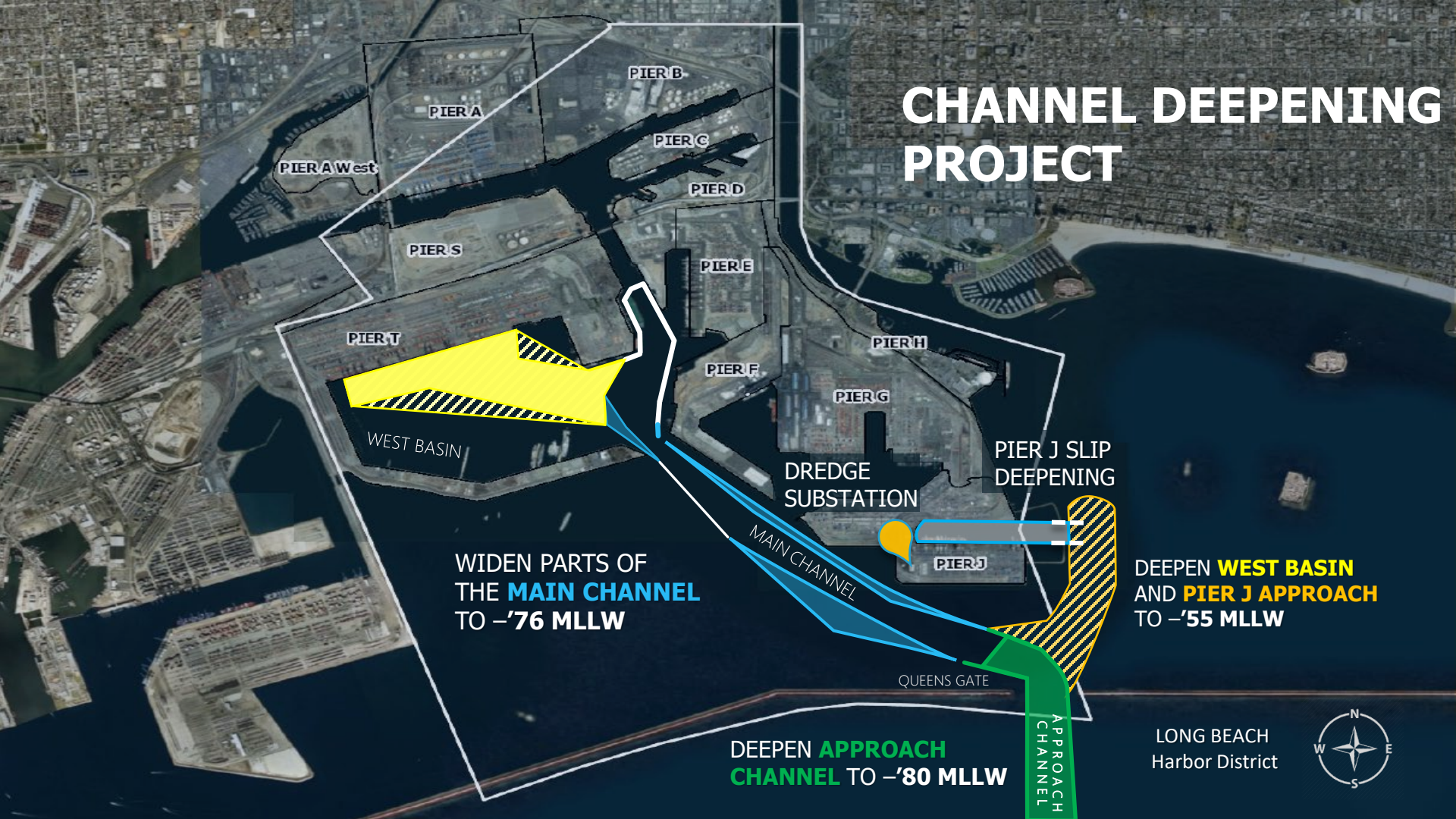
**MOST DIRECT**  
BETWEEN ASIA AND MOST OF  
AMERICA



## **KEEPING THE 24/7 CONVERSATION GOING**

- **EXPANDED NIGHT, WEEKEND HOURS AT TERMINALS**
- **ADVOCATE FOR SUPPLY CHAIN COOPERATION**

# CHANNEL DEEPENING PROJECT



WIDEN PARTS OF THE **MAIN CHANNEL** TO **-76 MLLW**

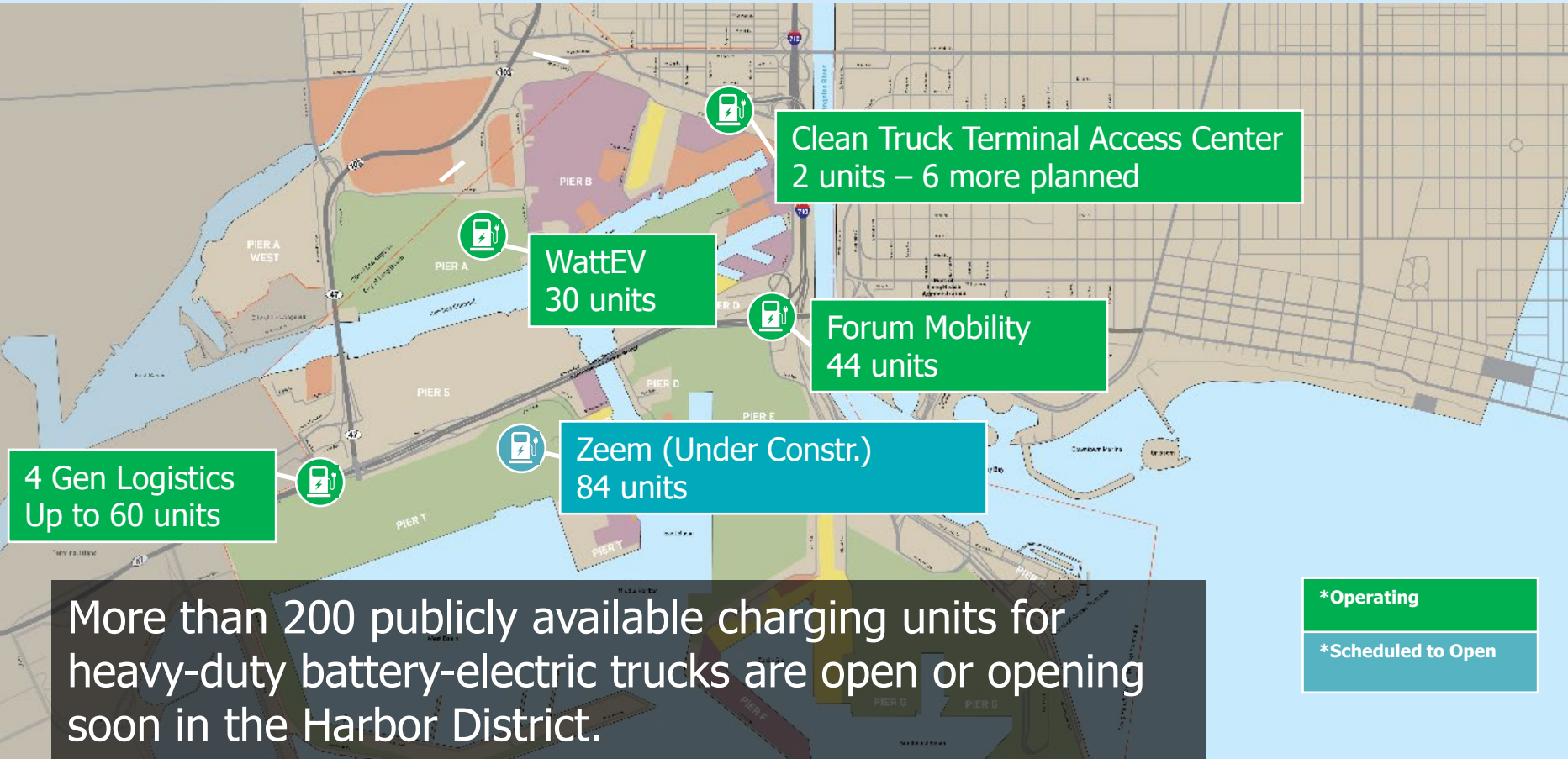
DEEPEN **WEST BASIN** AND **PIER J APPROACH** TO **-55 MLLW**

DEEPEN **APPROACH CHANNEL** TO **-80 MLLW**

LONG BEACH  
Harbor District



# CHARGING DEPOTS FOR ZE ELECTRIC DRAYAGE TRUCKS

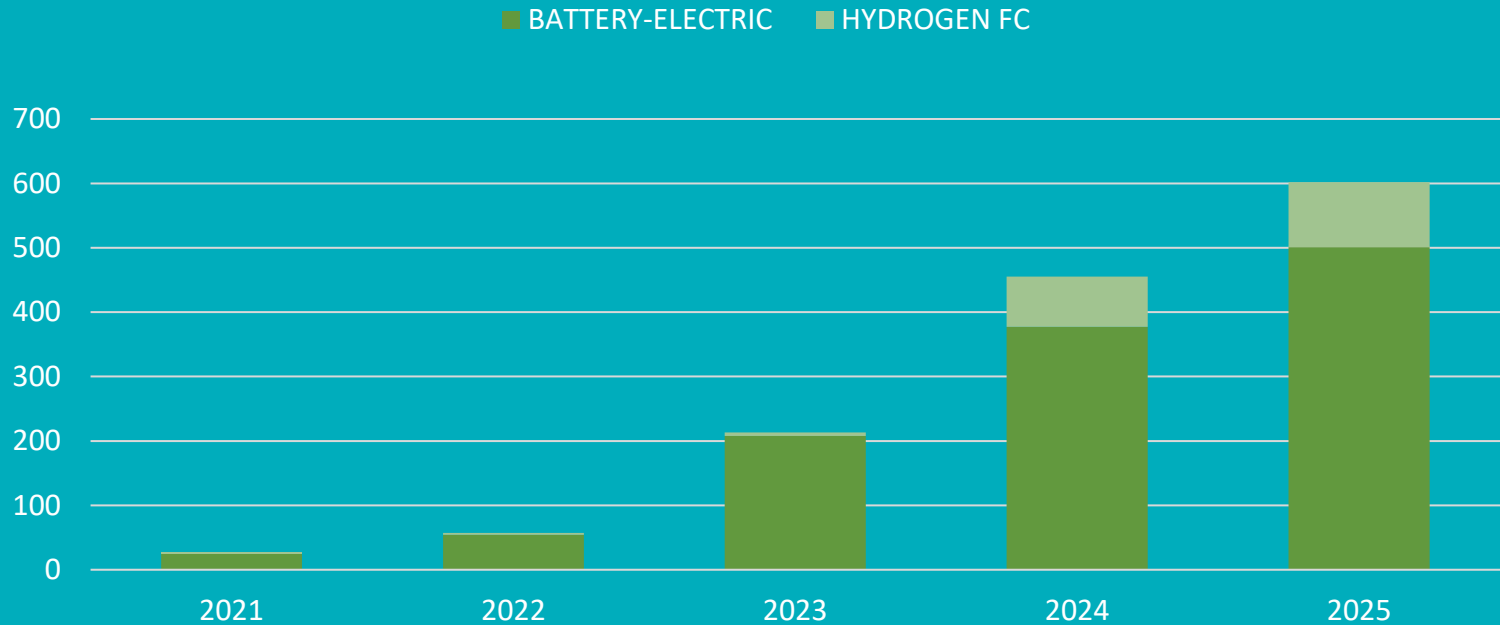


More than 200 publicly available charging units for heavy-duty battery-electric trucks are open or opening soon in the Harbor District.

**\*Operating**

**\*Scheduled to Open**

# ZERO-EMISSIONS TRUCKS 2021-25





# 621 ZE TRUCKS

- 518 BATTERY ELECTRIC
- 103 HYDROGEN FUEL CELL

# PIER WIND



Concept Rendering

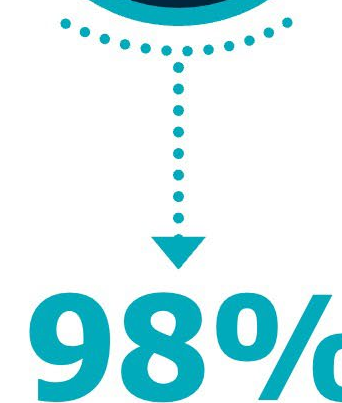
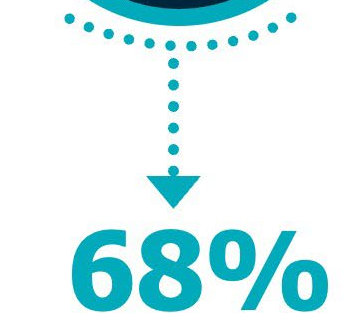
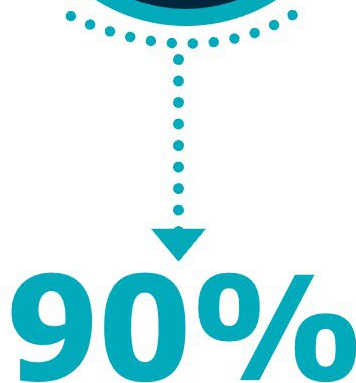
# **GREEN PORT POLICY**

ADOPTED IN **2005** BY THE LONG BEACH BOARD OF HARBOR COMMISSIONERS

- **PROTECT THE COMMUNITY**
- **DISTINGUISH THE PORT AS A GLOBAL LEADER**
- **PROMOTE SUSTAINABILITY**
- **EMPLOY BEST TECHNOLOGY**
- **ENGAGE AND EDUCATE THE COMMUNITY**

# 2024 AIR EMISSIONS INVENTORY

*Compared to 2005 Levels*



**CARGO**

**Up 44%**

# UPDATED CLEAN AIR PLAN

ADOPTED IN **2017** BY THE LONG BEACH AND LOS ANGELES BOARDS OF HARBOR COMMISSIONERS

- **A ZERO-EMISSIONS TRUCK FLEET**
- **ADOPT 'INTELLIGENT' EFFICIENCY SYSTEMS**
- **DEPLOY ZERO-EMISSIONS YARD EQUIPMENT**
- **EXPAND ON-DOCK RAIL TO 50 PERCENT**
- **REDUCE GHGS 40% BY 2030 AND 80% BY 2050**

# WORKFORCE/EDUCATION

- Scholarships
- Internships
- Women in Trade
- Engineers Week
- Career Days
- Harbor Tours
- Presentations
- Teacher Externships



# Upcoming Opportunities



Port of  
**LONG BEACH**  
THE PORT OF CHOICE

**\$60M**

PIER B RAIL YARD WEST EXPANSION  
& PIER B STREET REALIGNMENT



**\$170M**

PIER B RAIL NORTH YARD UTILITIES  
& PIER B ST WIDENING

**\$20M**

PIER B RAIL YARD ACCESS IMPROVEMENTS



**\$4M**

GATEWAY ENTRY AND MONUMENT SIGNAGE



**\$77M**

HARBOR SCENIC ROADWAY &  
INFRASTRUCTURE IMPROVEMENTS



**\$15M**

HARBOR FLEET ZE INFRASTRUCTURE



**\$2M**

PIER G BERTHS G212-213 SHIPLOADER  
NO. 2 INFRASTRUCTURE IMPROVEMENTS



**7** UPCOMING  
CONSTRUCTION  
PROJECTS  
SCHEDULED TO ADVERTISE IN  
THE NEXT 5 MONTHS



# **Finding Opportunities**

[www.polb.com/business/business-opportunities/](http://www.polb.com/business/business-opportunities/)

# Contact Information

Armond Morad, P.E.

Manager of Engineering

Construction Management Division

Port of Long Beach

[armond.morad@polb.com](mailto:armond.morad@polb.com)

(562) 283-7200



Port of  
**LONG BEACH**  
THE PORT OF CHOICE



Port of  
**LONG BEACH**  
THE PORT OF CHOICE

**THANK YOU**

